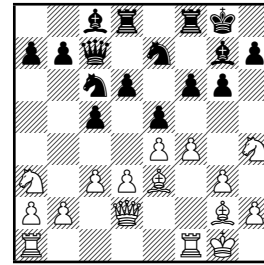


1 Manchester vs Derbyshire - 10th October 2009

1.1 Board 8 - Murphy vs Gamble



□ J Murphy (172 ECF) Manchester vs Derbyshire
■ R. Gamble (167 ECF) *Kings Indian Attack*

1 e4 e6 2 d3

The idea of 2.d3 is to avoid traditional French Defence lines transposing into Kings Indian Attack for White instead. Personally I much prefer these types of positions plus French players will more than likely be thrown of by this move expecting and hoping for more french typical positions.

2... c5 The usual response is 2...d5.

3 ♘f3 ♘c6 4 g3 g6 5 ♙g2 ♙g7 6 O-O ♘ge7 7 ♖e1

This prepares the thematic 8.e5 often played in response to 7...e5 which gives White a little more breathing space on his kingside and keeps the centre blocked.

7... ♗c7 8 ♘a3

In response to the previous move. Black now has a potential weakness at d6 which can be exposed by maneuvers such as Nb5 and Bf4. White need only be concerned about the response e5 which can be dealt with by the advance c3 - d4.

8... O-O 9 c3 e5 Pre-empting the inevitable push c3 - d4, Nb5 and Bf4. Black cannot allow this to happen.

10 ♙e3 d6 11 ♗d2 ♙g4 12 ♘h4!? White didn't much like the look of 12...Bxf3 13.Bxf3 f5. It also helps to support a potential f2 - f4 - f5 advance.

12... ♗ad8 13 f4 ♙c8 14 ♖f1 f6?! I'm not so sure about this. Black really needs to get 14...f5 in first. He can't afford to allow White to block up the centre and take control of yet more space on kingside. White's f5 advance as a result will greatly hamper his kingside mobility.

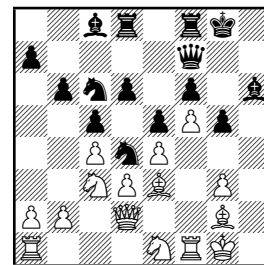
15 f5 g5 16 ♘f3 h6 17 ♘e1!? White prepares 18.h4 - prior to this move Black had the response g4 which is now met by Bxh6 winning a pawn.

17... b6 Black wants to develop his c8-Bishop to a6 and also protects c5. However, Black's main idea is d5 unfortunately for him White will never allow that. A better idea would have been a6 - b5 although by now that may be too slow.

18 c4 Somewhat predictably White prevents Black from breaking with 18...d5 temporarily shutting out all remaining counterplay for Black in the centre.

18... ♘d4 19 h4 ♘ec6? Again, Black should have played for a6-b5 it was his only hope. As it turns out the Black knight posted at c6 becomes a well known superfluous piece!

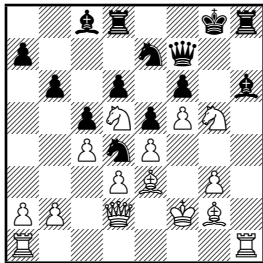
20 ♘b1 ♗f7 21 h×g5 h×g5 22 ♘c3 ♙h6? Voluntarily pinning his own Bishop to the h6 pawn which will be exposed later.



23 ♙f2 ♙g7 24 ♖h1 ♖h8 25 ♘f3! ♙g8? This is Black's first very crucial mistake. It's advisable not to break the link between his rooks. The subtle weaknesses black is creating in his currently unexposed position will soon be apparent. 25...Nxf3 is probably better or even Rdg8 followed by Kf8 tucking the King away from the danger that he's in - I was fortunate here that my opponent was oblivious to the pressure that is building.

26 ♖d5 ♗e7? Again 26...Nxf3 was essential to prevent White's next move. A clear rule to follow in a cramped position you should always exchange pieces! However, even after 26...Nxf3 27.Bxf3 28.Bh5 is coming and White's bishop will become a nuisance on g6.

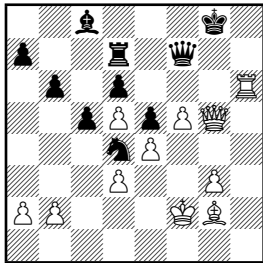
27 ♗xg5!! A sacrifice that exposes all the weaknesses in Black's position. He cannot accept it with fxe5 because Bxg5 would force the loss of a piece immediately. Now White wins at least a pawn else he wins more material or mate is coming.



27... ♗xg5 28 ♖xh8+ ♗xh8 29 ♖h1+ ♗g8 30 ♗xg5 ♗xd5 31 cxd5 ♖d7 32 ♖h6! A crucial killing blow which all but forces the win of the Black Queen

32... fxe5?? Hastens his demise but regardless Black cannot stop 33.Rxf6 and mate or the win of the Queen will follow.

33 ♖xg5+ Black Resigns in face of 33...Qg7 being met by 34.Rg6 or on 33...Kf8 34.Rh8+ and soon mate will follow. 1:0



1.2 Board 7 - G El Gehani vs S Bracey

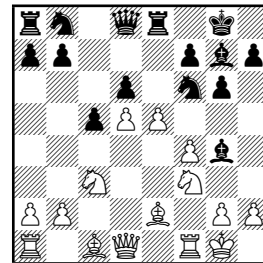
□ S Bracey (183 ECF) Manchester vs Derbyshire
 ■ G El Gehani (171 ECF) *Modern Benoni*

1 d4 ♗f6 2 c4 c5 3 d5 e6 4 ♗c3 exd5 5 cxd5 d6 6

e4 g6 7 f4 ♗g7 8 ♗e2 O-O 9 ♗f3 Black needs to be mindful here of 10.e5

9... ♗g4 Preparing to meet 10.e5 with 10...Bxf3 11.Bxf3 dxe5 12.fxe5 Re8 and 13.Bf4 Nfd7 where White's centre is in danger of collapse and especially without having castled is very precarious.

10 O-O ♖e8 11 e5? White here overextends his centre. Black could now play the above suggested 10...dxe5 11.fxe5 Nfd7 12.Bf4 Bxf3 and White's centre pawns are ready to crumble under the pressure. Better for White would have been to maintain his position and strengthen his centre with 11.Qd3

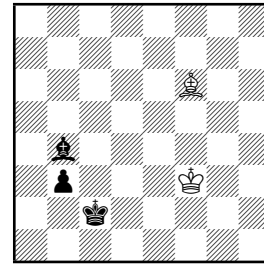
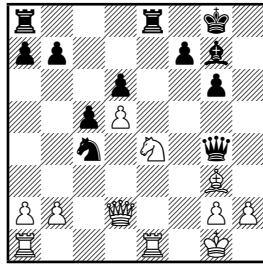


11... ♗xf3 12 exf6 ♗xe2 13 ♗xe2 ♖xf6 14 f5 ♖e5! After a series of simplifying exchanges Black finds himself in an okay position. His Queen commands the centre, the e-file and the g-diagonal. His pieces are also more active than White's with other pieces ready to join the battle.

15 fxe6 hxe6 15...fxg6 is bad in light of the weakened e6 square.

16 ♖e1 ♗d7 17 ♗f4 ♖e7 18 ♖d2 I believe 18.Qb3 may have been better here - eyeing the b-pawn and defending d5. It also threatens Qg3 ganging up on the weak d6 pawn. 18...Nb6 19.Qg3 Rad8 20.Nc3 with Ne4 coming next Rad1 next centralising his rook and White is looking in better shape than he was.

18... ♗e5 19 ♗c3 ♖d7 20 ♗e4 ♖g4 21 ♗g3 ♗c4 Having failed to take the initiative White has handed it to Black. This move unleashes the power in the g7-Bishop winning at least a pawn for no compensation.

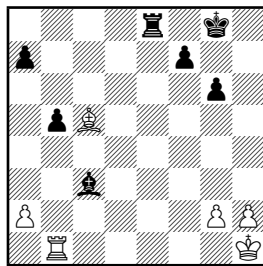


1.3 Board 7 - S Gilmore vs H Lamb

22 ♖c2 b5 Never a bad move to advance your pawn majority. The c4-square is now a very strong outpost for Black.

23 ♘xd6 ♘xd6 24 ♗xd6 ♖d4+ Black chooses to go into a favourable same coloured Bishop ending here.

25 ♔h1 ♖xd5 26 ♖xc5 ♖xc5 27 ♗xc5 ♗xb2 28 ♖xe8+ ♖xe8 29 ♖b1 ♗c3 Unfortunately for White here that back rank threats mean he can't win his pawn back. 30.Rxb5 is met by 30...Re1+ 31.Bg1 Bd4 winning a piece and the game.



30 ♗xa7 ♖a8 Black wins his pawn back.

31 ♗c5 ♖xa2 32 ♔g1 ♖a1 33 ♖xa1 ♗xa1 Having reached a winning ending it's now all a matter of technique for Black.

34 ♗b4 f5 35 ♔f2 ♔f7 36 ♔f3 ♔e6 37 g4 f×g4+ 38 ♔×g4 ♗f6 39 h4 ♔d5 40 h5 g×h5+ 41 ♔×h5 ♔c4 42 ♗f8 ♗d4 43 ♔g4 ♗c5 Black's pawn will advance now - White is helpless.

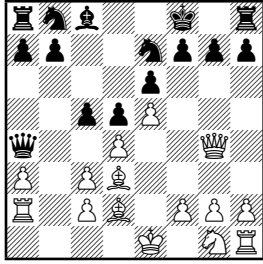
44 ♗g7 b4 45 ♔f3 ♔d3 46 ♗f6 b3 47 ♗b2 ♔c2 48 ♗f6 ♗b4 49...Bc3 and 50...c2 cannot be prevented so White Resigns

0 : 1

□ S Gilmore (171 ECF) Manchester vs Derbyshire
 ■ H Lamb (181 ECF) French Defence

1 e4 e6 2 d4 d5 3 ♘c3 ♗b4 4 e5 c5 5 a3 ♗xc3+ 6 b×c3 ♘e7 7 ♖g4 ♔f8!? Harry's comment on this move: "An interesting move which I occasionally play. When I play it I always watch my opponents face. Often they have not seen it before and I like to see the shock on their face. Simon had seen it in a book but did not know any analysis on it When I win I usually win a pawn on the queenside and stand an attack." I can totally understand his comments with regards to this move. At first it seems totally bizarre - Black surrenders his right to castle and locks in the Rook at h8 for the time being... However, upon further investigation of the position it seems that slightly justified and perhaps psychologically a good weapon to use against those who know their theory. White's next move in my eyes - to continue normally here is a mistake. 8.Bd2 to prevent 8.Qa5 perhaps intending 9.c4? White is in danger here of losing the initiative and reaching an equal position if he doesn't create some form of counterplay or restrict Black's play on the Queenside.

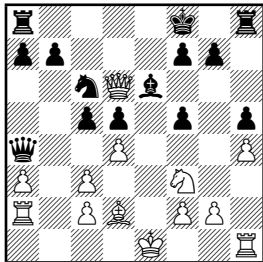
8 ♗d3 ♖a5 9 ♗d2 ♖a4? 10 ♖a2?! At first I thought this move looked a little bizarre and I wasn't keen on it. White needs to deal with the move 10...c4 but how can he avoid losing a pawn. That's when I saw the very interesting move 10.c4!? now if 10...dxc4 11.dxc5 and Black cannot recapture on d3 because of the pin on his Queen. As a result he loses a pawn so Black's best response is probably 10...Nbc6 and 11.Nf3 White's position here has much better prospects than in the game.



10... ♖bc6 11 ♗f3 ♕d7 12 h4 h5 Black temporarily stops and counterplay on kingside. White's position here looks a little claustrophobic.

13 ♖f4 ♗f5 14 ♕xf5 exf5 15 e6 White regains his pawn after the recapture and Qd6+ but I wonder if it wasn't better for white here to go 13.O-O followed by Rb1 or even simply 13.dxc5 perhaps - offering an exchange of queens with a pawn to the good and control of the centre.

15... ♕xe6 16 ♖d6+ A little too eager perhaps - 16.dxc5 Qb5 [threatening 17...Qb1+ and preventing White from castling] 17.Qd6+ Ne7 18.Bg5 Qb1+ 19.Kd2 Qxa2 20.Qxe7+ Kg8 21.Qxb7 Kh7 22.Bf4 preventing counterplay on the b-file, 22...Rac8 23.Ng5+ Kg6 24.Re1 threatening a mating net - 24...Rhf8 25.Bd6 presents a very interesting alternative to the play that followed.

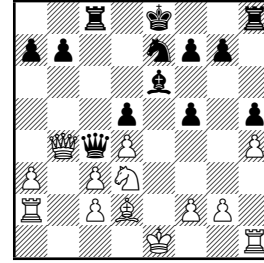


16... ♗e7 17 ♖xc5 I'm not sure why 17.Bg5 wasn't considered here. Black can't play 17...f6 because the e6 bishop drops and retaking with fxe6 is suicide because of 18.Ne5 threatening mate. If 17...Qd7 18.Qxc5 and on 17...Re8 18.O-O.

17... ♖a6 A key move from Black which prevents White from castling, obtaining a grip on the b-file and a more favourable position.

18 ♗e5 ♖c8 19 ♖b4 ♗e8 20 ♗d3 ♖c4 Harry himself admitted this may have been a midjudgement by him due to his weak pawns- however, I tend to disagree. It's favourable for Black to exchange

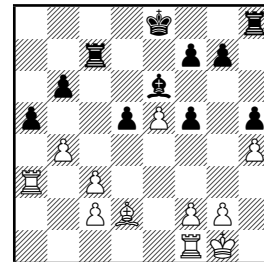
queens here despite the fact that the b7 pawn is a weakness.



21 ♖a1 b6 22 O-O I'm not sure about this move although it looks natural to take the opportunity to castle White is better to play 22.Ne5 [22...Qxb4 now is favourable for White] 22...Qa6 [preventing White from castling] 23.f4! fixes Black's bad bishop to it's place on and securing the weak e5 and g5 squares. 23...f6 24.Nd3 White can now play Kf2 followed by Rhe1 with promising pressure on the kingside.

22... ♖xb4 23 axb4 ♗c6 24 ♗e5? I'm not sure why White is so hasty to exchange as the old rule goes: "Exchanges benefit those with less space". Not only that but it serves to block up the e-file and allows black the opportunity of undoubling his f7-pawn.

24... ♗xe5 25 dxe5 ♖c7 26 ♖a3 a5! A wise decision, Harry shows real experience here realising that after the storm of exchanges his opponent won't have enough to win even with the pawn.



27 bxa5 bxa5 28 ♖xa5 ♗d7 29 ♖b1 ♖hc8 30 ♖b6 ♖c6 31 ♖a7+ ♖8c7 32 ♖xc7+ ♗xc7 33 ♖xc6+ ♗xc6 A draw could probably have been agreed here as neither side can make progress, but a few more were played just to make it certain.

34 ♗f1 ♗b5 35 ♗e2 ♗a4 36 ♕c1 ♗b5 Draw Agreed 1/2 : 1/2